



2 LOWNARD COTTAGES

WEEK, DARTINGTON, TOTNES, TQ9 6JJ



Robert Williams

SALES | LETTINGS | AUCTIONS

“This has been a lovely family home for us in such a beautiful and peaceful location”.


nichecom
DRAFT COPY FOR PROOFING PURPOSES ONLY



2 LOWNARD COTTAGE

WEEK, DARTINGTON, TOTNES, TQ9 6JJ

2 Lownard Cottages is one of a pair of cottages which were formerly a cattle shed and were converted in houses by Dartington Hall Trust between the wars. Embodying the Arts and Crafts movement and the ethos of the Elmhursts, the style is very reminiscent of the stereotypical English country cottage with its leaded light windows and thatched roof. The property is located in a delightful spot in the peaceful hamlet of Week, an area which has changed little in centuries. Fronted by a country footpath which was once one of the oldest drover's ways in England, 2 Lownard Cottages has a delightful level garden sporting many colourful flowers with a backdrop of light woodland and is bounded by the Bidwell Brook. This well proportioned garden is a sun trap and features a double glazed summer house with electricity. Also outside is an old, stone piggery currently used for storage, two garages and parking for 3 cars. There is also a sloping back garden which enjoys an abundance of seasonal wild flowers. Particular features of this house are the modern, oak strip flooring covering most of the ground floor. The kitchen has underfloor heating and contains a modern Aga. The cosy living room has an ornate fireplace with wood/coal burner and there is a separate dining room and small utility room. Upstairs are 3 bedrooms, all quite large with the main bedroom having a wash hand basin. There is a family shower room and WC.

3		bedrooms	1		bathrooms
2		receptions	3		car spaces

Local Authority: South Hams District Council

Council Tax Band: D **Tenure:** Freehold

Heating: Oil fired central heating

Services: Mains electricity, private water, mains drainage

Energy Efficiency Rating: E





Denotes restricted
head height

Lownard Cottages, Totnes, TQ9

Approximate Area = 1147 sq ft / 106.5 sq m

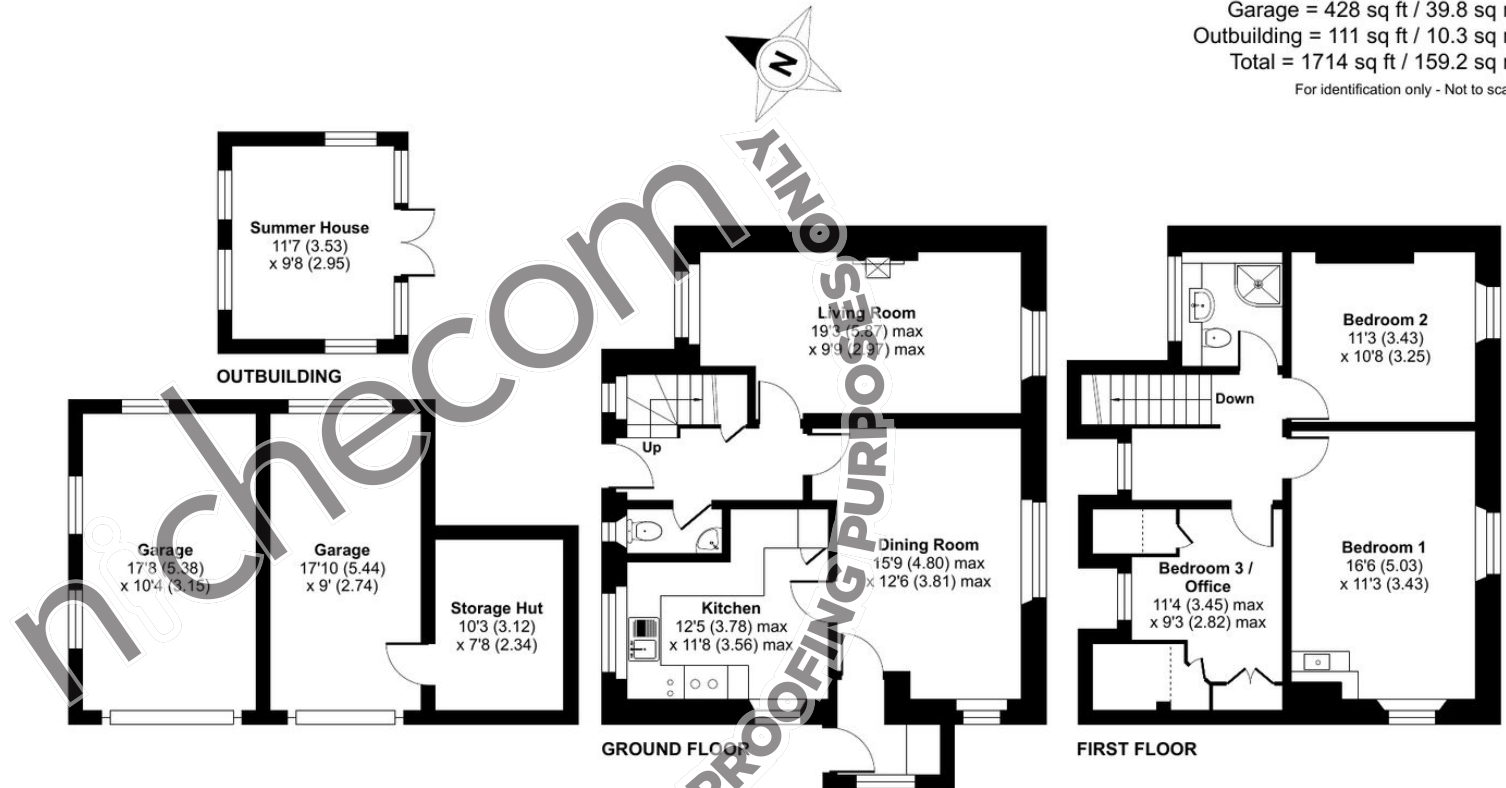
Limited Use Area(s) = 28 sq ft / 2.6 sq m

Garage = 428 sq ft / 39.8 sq m

Outbuilding = 111 sq ft / 10.3 sq m

Total = 1714 sq ft / 159.2 sq m

For identification only - Not to scale



DRAFT COPY FOR PROOFING PURPOSES ONLY

Produced in accordance with RICS Property Measurement 2nd Edition, incorporating International Property Measurement Standards (IPMS2 Residential). © nichecom 2024. Produced for Robert Williams Ltd. REF: 1208051



Robert Williams

SALES | LETTINGS | AUCTIONS

Robert Williams Estate Agents, 2 Southernhay West, Exeter, EX1 1JG

Tel: 01392 204800 • sales@robertwilliams.co.uk • robertwilliams.co.uk

IMPORTANT: we would like to inform prospective purchasers that these sales particulars have been prepared as a general guide only. A detailed survey has not been carried out, nor the services, appliances and fittings tested. Room sizes should not be relied upon for furnishing purposes and are approximate. If floor plans are included, they are for guidance only and illustration purposes only and may not be to scale. If there are any important matters likely to affect your decision to buy, please contact us before viewing the property.